



THE MORRISON
NORTH VANCOUVER

TYPICAL UNIT F

1 BED + 1 BATH + DEN (OPTION)

TOTAL: 942-1006 sq.ft. | INDOOR: 638-702 sq.ft. | OUTDOOR: 304 sq.ft.

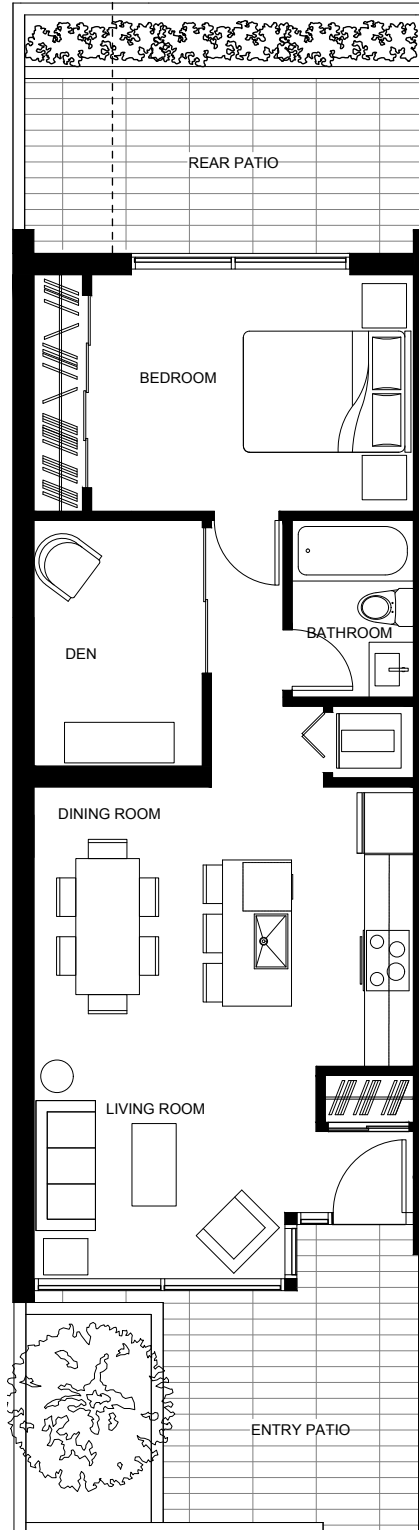
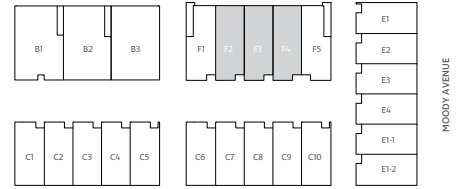
*UNIT LAYOUTS AND MEASUREMENTS MAY VARY FROM UNIT TO UNIT



Typical Unit F

1 BED+ 1 BATH + DEN (OPTION)

EAST 3RD STREET



TOTAL: 942-1006 sq.ft. | INDOOR: 638-702 sq.ft. | OUTDOOR: 304 sq.ft.

FEATURES

COMMUNITY

- Located in a historically family-friendly neighbourhood with tree-lined streets and a strong feeling of community
- Situated steps from some of the best boutique shops, new artisanal cafes, and accoladed restaurants in North Vancouver
- Within walking distance from the vibrant Lower Lonsdale Quay area and the evolving ShipYards Plaza
- Adjacent to beautiful Moodyville Park, plentiful greenways and the North Shore's famous Spirit Trail, perfect for walking with a stroller or biking with a pet
- Easy access to major transit routes and only a 12 minute commute to downtown Vancouver by SeaBus with access to Canadaline & YVR

FIRST IMPRESSION

- A collection of 40 thoughtfully designed modern townhomes and garden flats situated across 5 buildings, each with their own private entrance and front door
- Distinctive London-Inspired West Coast Modern Design by award-winning Shape Architecture. Uniquely accented with white brick exteriors, grey metal detailing and cedar finishes
- Developed and overseen with care by CREO Developments who approved every detail and approached the project with a focus on community and family legacy
- Built by award-winning Haebler Group with high quality construction and building technology
- Highly energy efficient; built to the rigorous sustainability standards of LEED Gold
- Exceptional indoor-outdoor living; all homes feature landscaped private patios with some boasting generous balconies and private rooftop decks with sweeping views
- Private and quiet landscaped courtyard and common area designed to enhance your outdoor experience
- Gas bib for main level patio and rooftop deck for your BBQing and entertaining pleasure

INTERIOR COMFORTS

- Choice of three artfully-selected designer colour palettes by Annaliese Kelly Designs
- All homes complete with spacious floor plans designed with thoughtful, efficient layouts
- Incredible natural light built-in with expansive windows
- Light wells in select units maximize the natural light and increase airflow
- West Coast touches with wide-plank engineered white oak hardwood floors in foyer, kitchen, dining and living rooms
- Luxurious comfort added with touches like radiant heat on main floor
- Over height ceilings on main floor add a wow factor to the homes
- Recessed pot-lighting throughout main floor set the scene
- Sleek modern interior LED designer pendants
- Wool blend broadloom carpet in bedrooms and flex rooms for design and durability
- High-end appliances with full-size LG High Efficiency washer and dryer
- Easy and efficient Nest Learning Thermostat included in all homes
- Roller blinds throughout

GOURMET KITCHENS

- Bosch Premium stainless steel gas cooktop, stove and pull out range hood for your inner chef
- Bosch Integrated paneled dishwasher and stunning 36" French Door fridge
- Stainless Steel built-in microwave
- Easy-to-maintain solid quartz countertops with full height quartz backsplash
- Stainless steel single bowl undermount sinks
- Large islands for family-style cooking and entertaining
- Sleek flat panel cabinet doors in light oak, dark oak or white with soft-close doors and drawers
- USB charging outlets in all kitchens
- Pantry storage in select units

BEAUTIFUL BATHROOMS

- Large porcelain tiles in a beautiful marble and matte gray finish
- Elegant quartz counter tops to complete the sleek look and functionality
- Contemporary floating vanity with sleek flat panel cabinet doors and porcelain under-mount sinks
- Master bathroom shower with frameless glass shower doors
- Luxurious soaker tub in master bathroom
- Designer chrome bath and shower fixtures
- Nu-heat in-floor radiant heating in master bathroom for year round comfort
- Water-efficient dual-flush toilets

BUILDING DETAILS/ENERGY PROGRAM

- Gated, well-lit, and safe underground parking
- Private gear lockers available in select homes* and secure bike storage for everyone
- Low-E, energy-efficient double-glazed windows
- High water-efficiency plumbing fixtures
- Energy efficient lighting
- Energy Star™ appliances
- Low emitting materials, adhesives, sealants and paint
- Indigenous and low-maintenance landscaping
- Hard-wired smoke detectors
- Sustainable heat recovery ventilator unit introduces fresh air into each room
- Comprehensive Third Party 2/5/10 Warranty Insurance:
- 2-year materials and labour warranty
- 5-year building envelope warranty
- 10-year structural warranty
- Each unit prewired for security system

THE OPTIONS

- Selection of three designer colour palettes for your home
- Air conditioning optional
- Gaggeneau Gourmet Chef Kitchen Upgrade
- 4th bedroom on Level 2 of Townhomes A and C

*Most homes. This is not an offering of sale, any such offering must include a disclosure statement. Dimensions, sizes, specifications, layouts and materials are approximate only and are subject to change without notice. E.&O.E..



604-999-6227 | INFO@THEMORRISON.CA | THEMORRISON.CA

 [@creodevelopments](https://www.instagram.com/creodevelopments) | [#MeetTheMorrison](https://www.instagram.com/MeetTheMorrison)