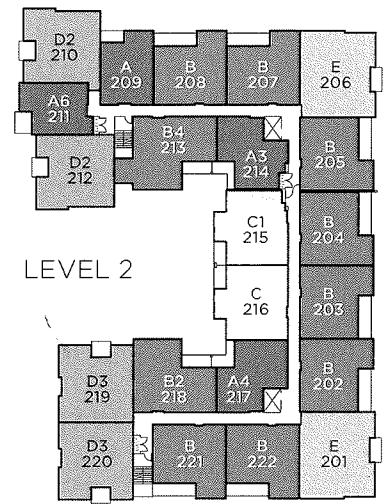
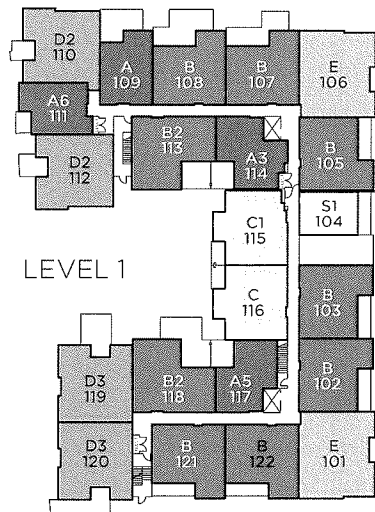
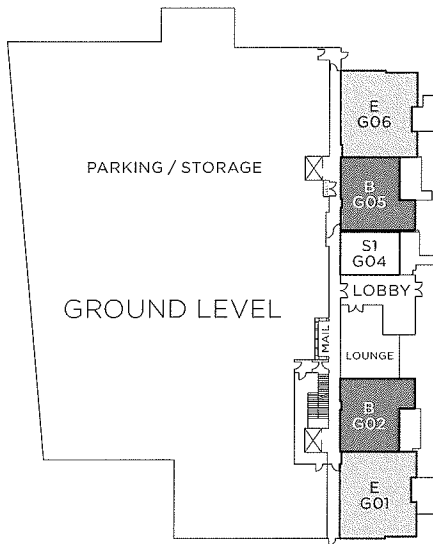
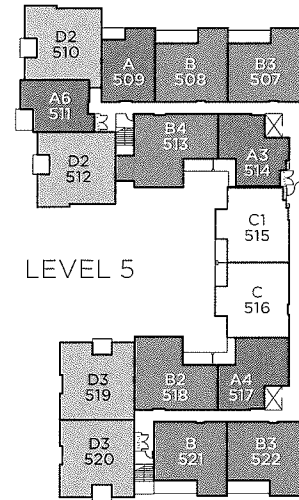
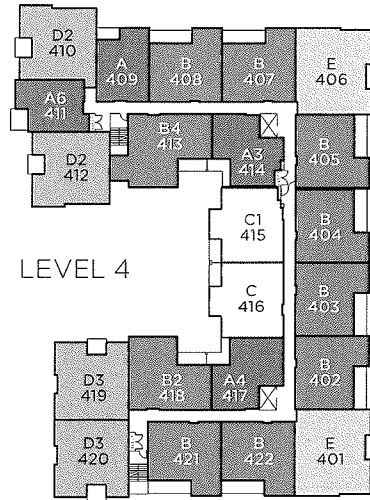
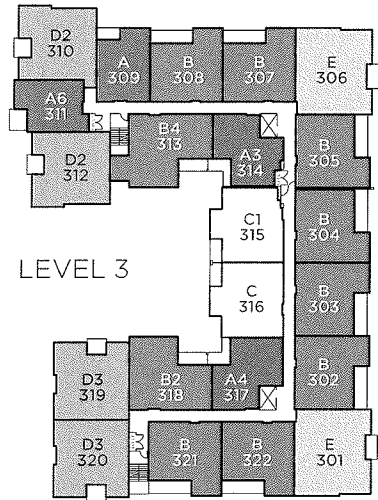




SOUTH BUILDING

TALUSWOOD

AT TIMBER COURT



A SERIES
1 Bedroom
1 Bedroom + Den

B SERIES
2 Bedroom
2 Bedroom + Den

C SERIES
2 Bedroom

D SERIES
2 Bedroom

E SERIES
3 Bedroom

S SERIES
Studio



THE DEVELOPER RESERVES THE RIGHT TO MAKE MODIFICATIONS OR SUBSTITUTIONS SHOULD THEY BE NECESSARY. ANY MEASUREMENTS PROVIDED ARE APPROXIMATE ONLY. THE QUALITY RESIDENCES AT TALUSWOOD ARE BUILT BY POLYGON TALUSWOOD HOMES LTD. AND POLYGON TIMBER COURT LTD. THIS IS CURRENTLY NOT AN OFFERING FOR SALE. ANY SUCH OFFERING CAN ONLY BE MADE BY WAY OF A DISCLOSURE STATEMENT. E. & O.E. 09/01/17

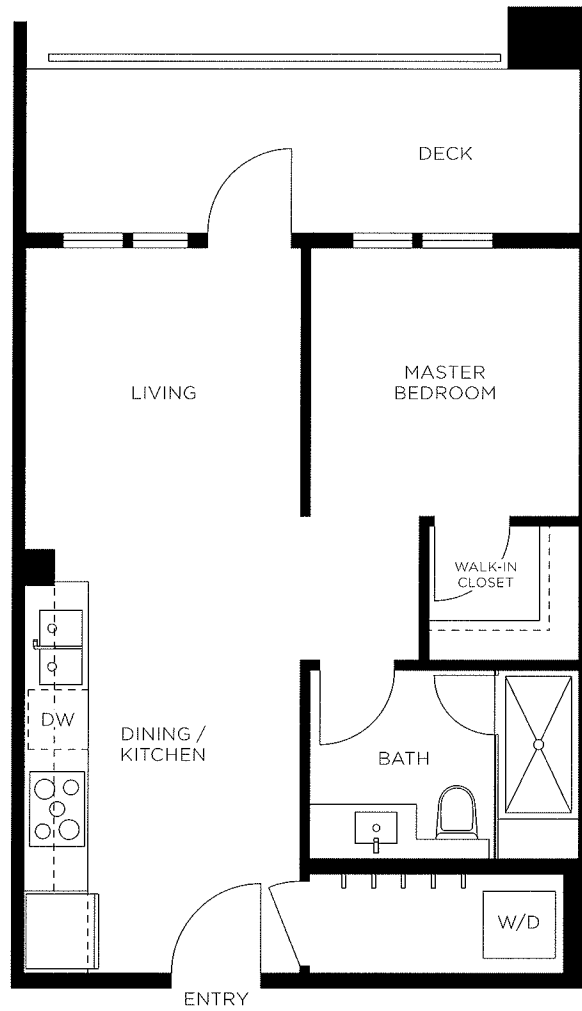


TALUSWOOD

AT TIMBER COURT

S1

Studio, 1 Bathroom
Approx. 490 - 494 Sq.Ft.



THE DEVELOPER RESERVES THE RIGHT TO MAKE MODIFICATIONS OR SUBSTITUTIONS SHOULD THEY BE NECESSARY. ANY MEASUREMENTS PROVIDED ARE APPROXIMATE ONLY. THE QUALITY RESIDENCES AT TALUSWOOD ARE BUILT BY POLYGON TALUSWOOD HOMES LTD. AND POLYGON TIMBER COURT LTD. THIS IS CURRENTLY NOT AN OFFERING FOR SALE. ANY SUCH OFFERING CAN ONLY BE MADE BY WAY OF A DISCLOSURE STATEMENT. E. & O. E. 09/01/17

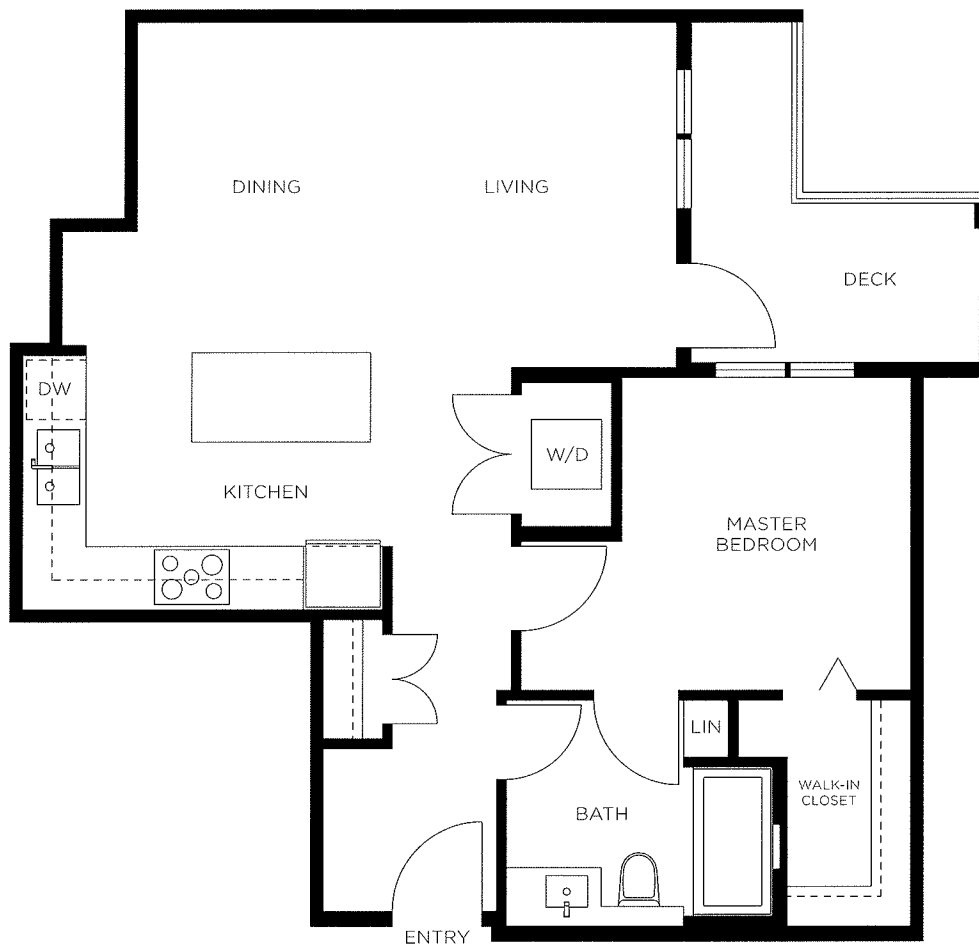


TALUSWOOD

AT TIMBER COURT

A3

1 Bedroom, 1 Bathroom
Approx. 714 Sq.Ft.



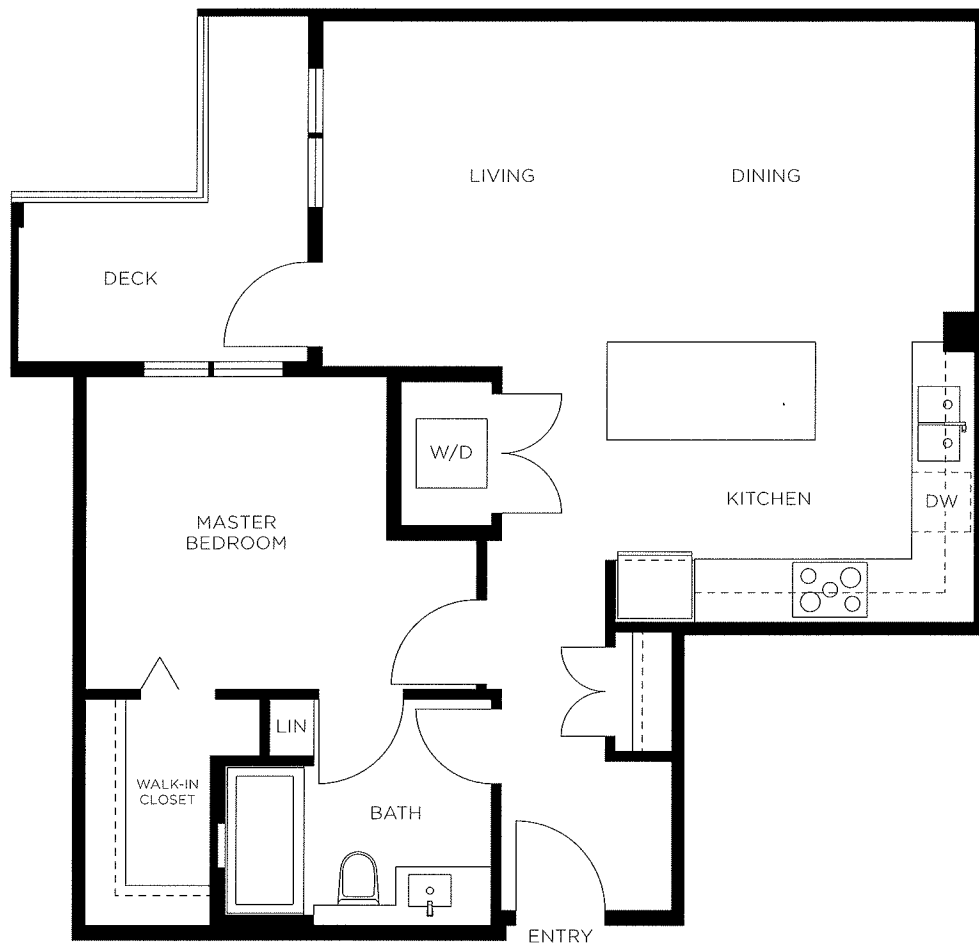


TALUSWOOD

AT TIMBER COURT

A4

1 Bedroom, 1 Bathroom
Approx. 745 Sq.Ft.



THE DEVELOPER RESERVES THE RIGHT TO MAKE MODIFICATIONS OR SUBSTITUTIONS SHOULD THEY BE NECESSARY. ANY MEASUREMENTS PROVIDED ARE APPROXIMATE ONLY. THE QUALITY RESIDENCES AT TALUSWOOD ARE BUILT BY POLYGON TALUSWOOD HOMES LTD. AND POLYGON TIMBER COURT LTD. THIS IS CURRENTLY NOT AN OFFERING FOR SALE. ANY SUCH OFFERING CAN ONLY BE MADE BY WAY OF A DISCLOSURE STATEMENT. E. & O.E. 09/01/17

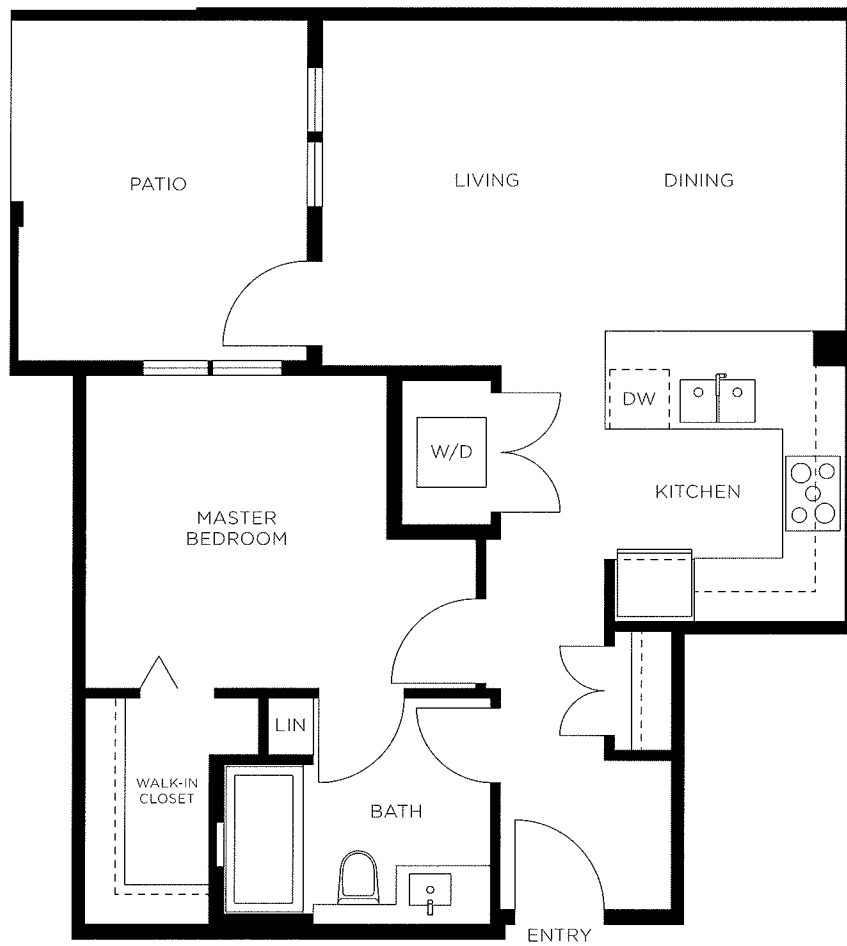


TALUSWOOD

AT TIMBER COURT

A5

1 Bedroom, 1 Bathroom
Approx. 657 Sq.Ft.



THE DEVELOPER RESERVES THE RIGHT TO MAKE MODIFICATIONS OR SUBSTITUTIONS SHOULD THEY BE NECESSARY. ANY MEASUREMENTS PROVIDED ARE APPROXIMATE ONLY. THE QUALITY RESIDENCES AT TALUSWOOD ARE BUILT BY POLYGON TALUSWOOD HOMES LTD. AND POLYGON TIMBER COURT LTD. THIS IS CURRENTLY NOT AN OFFERING FOR SALE. ANY SUCH OFFERING CAN ONLY BE MADE BY WAY OF A DISCLOSURE STATEMENT, E. & O.E. 09/01/17

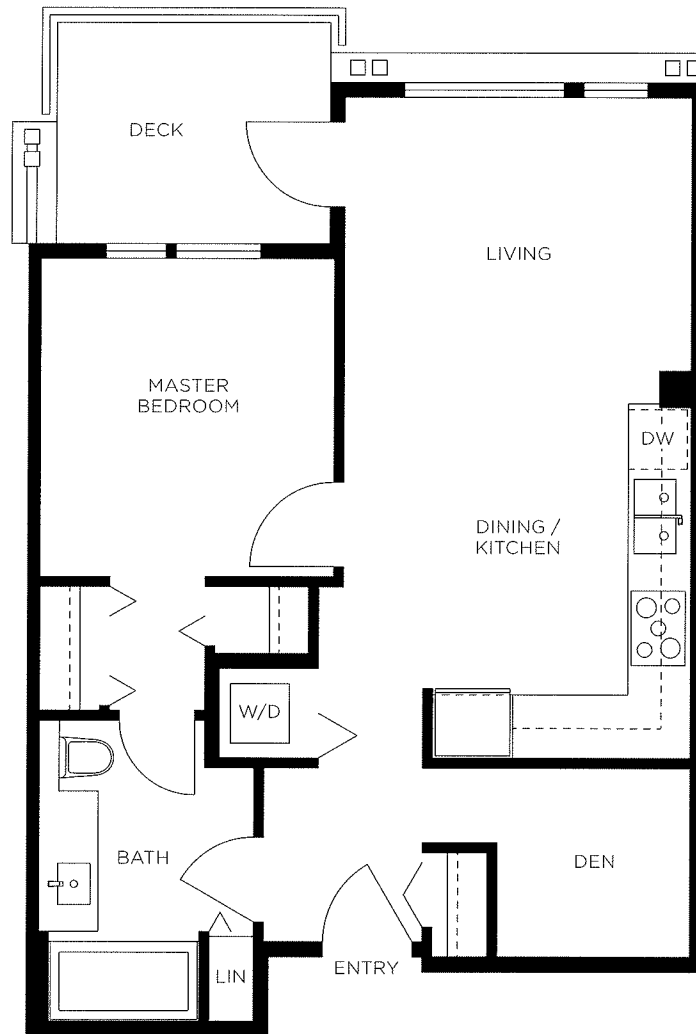


TALUSWOOD

AT TIMBER COURT

A6

1 Bedroom + Den, 1 Bathroom
Approx. 624 Sq.Ft.



THE DEVELOPER RESERVES THE RIGHT TO MAKE MODIFICATIONS OR SUBSTITUTIONS SHOULD THEY BE NECESSARY. ANY MEASUREMENTS PROVIDED ARE APPROXIMATE ONLY. THE QUALITY RESIDENCES AT TALUSWOOD ARE BUILT BY POLYGON TALUSWOOD HOMES LTD. AND POLYGON TIMBER COURT LTD. THIS IS CURRENTLY NOT AN OFFERING FOR SALE. ANY SUCH OFFERING CAN ONLY BE MADE BY WAY OF A DISCLOSURE STATEMENT. E. & O.E. 09/01/17



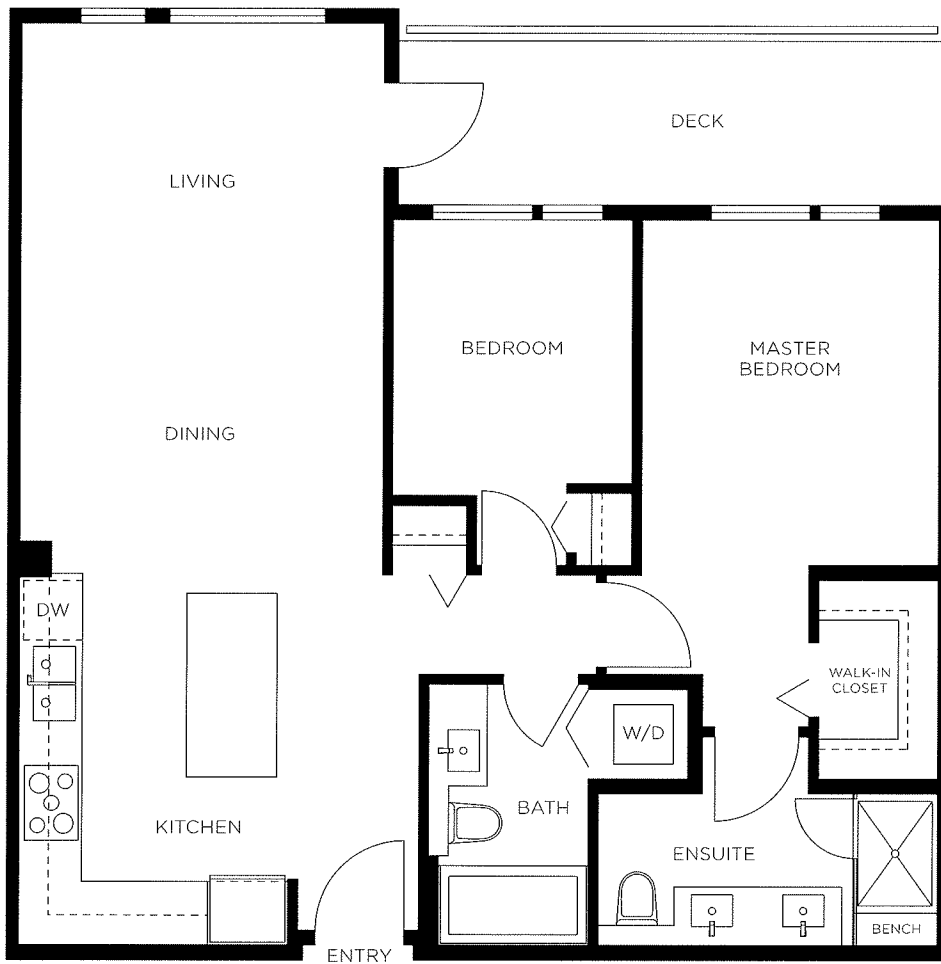
TALUSWOOD

AT TIMBER COURT

B

2 Bedroom, 2 Bathroom
Approx. 872 - 883 Sq.Ft.

THIS FLOOR PLAN IS A
DRAFT



THE DEVELOPER RESERVES THE RIGHT TO MAKE MODIFICATIONS OR SUBSTITUTIONS SHOULD THEY BE NECESSARY. ANY MEASUREMENTS PROVIDED ARE APPROXIMATE ONLY. THE QUALITY RESIDENCES AT TALUSWOOD ARE BUILT BY POLYGON TALUSWOOD HOMES LTD. AND POLYGON TIMBER COURT LTD. THIS IS CURRENTLY NOT AN OFFERING FOR SALE. ANY SUCH OFFERING CAN ONLY BE MADE BY WAY OF A DISCLOSURE STATEMENT, E. & O.E. 09/01/17



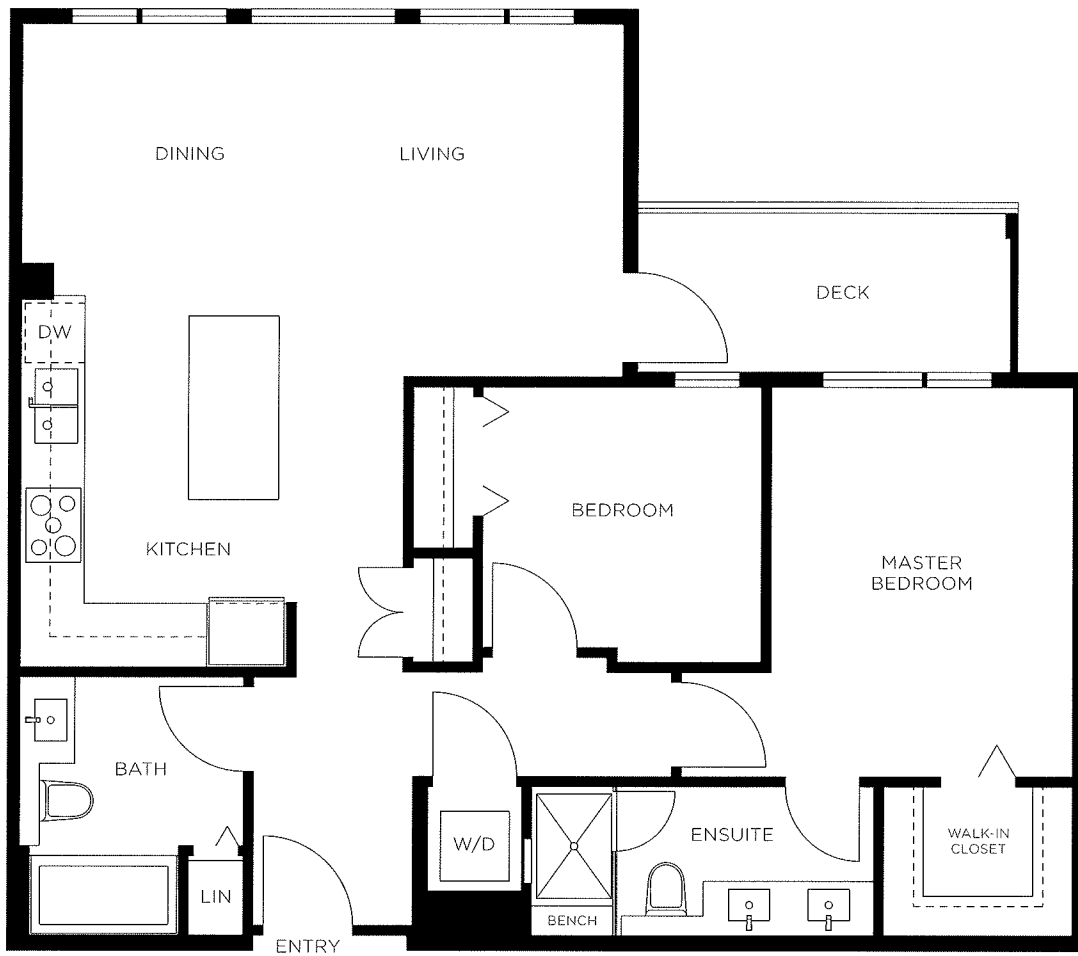
TALUSWOOD

AT TIMBER COURT

B2

2 Bedroom, 2 Bathroom
Approx. 940 - 948 Sq.Ft.

DRAFT



THE DEVELOPER RESERVES THE RIGHT TO MAKE MODIFICATIONS OR SUBSTITUTIONS SHOULD THEY BE NECESSARY. ANY MEASUREMENTS PROVIDED ARE APPROXIMATE ONLY. THE QUALITY RESIDENCES AT TALUSWOOD ARE BUILT BY POLYGON TALUSWOOD HOMES LTD. AND POLYGON TIMBER COURT LTD. THIS IS CURRENTLY NOT AN OFFERING FOR SALE. ANY SUCH OFFERING CAN ONLY BE MADE BY WAY OF A DISCLOSURE STATEMENT. E. & O. E. 09/01/17

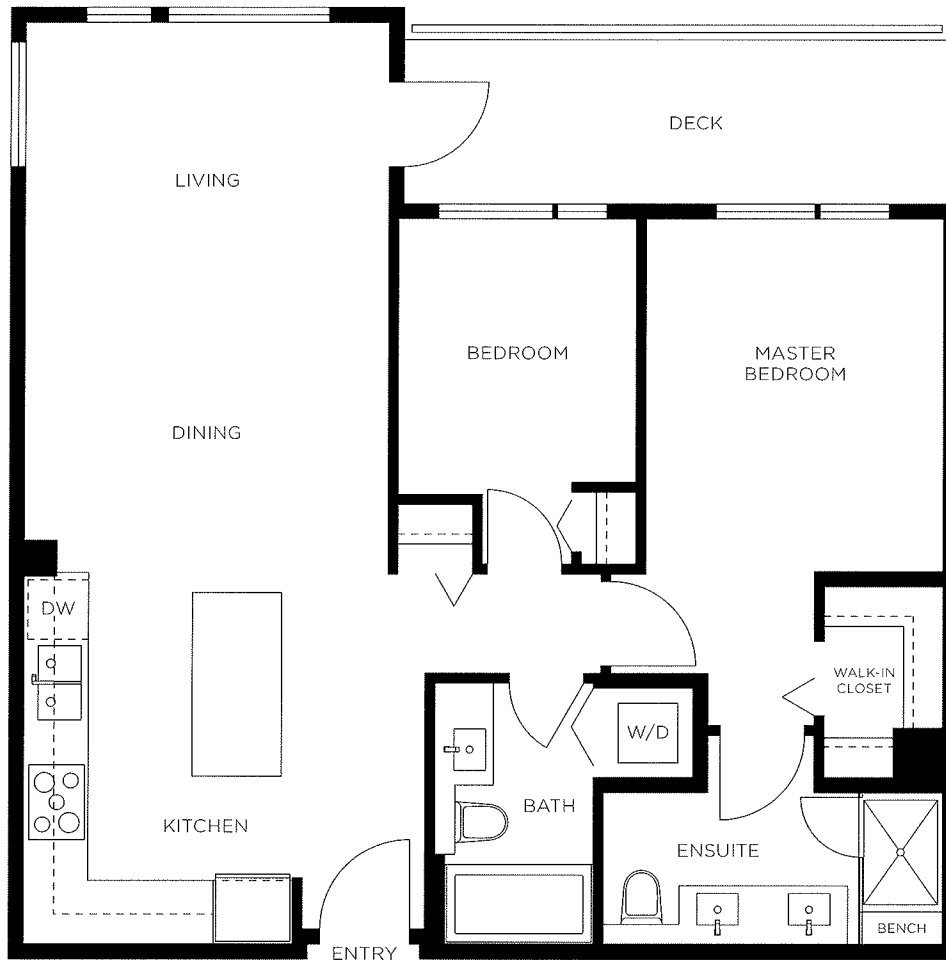


TALUSWOOD

AT TIMBER COURT

B3

2 Bedroom, 2 Bathroom
Approx. 870 Sq.Ft.



THE DEVELOPER RESERVES THE RIGHT TO MAKE MODIFICATIONS OR SUBSTITUTIONS SHOULD THEY BE NECESSARY. ANY MEASUREMENTS PROVIDED ARE APPROXIMATE ONLY. THE QUALITY RESIDENCES AT TALUSWOOD ARE BUILT BY POLYGON TALUSWOOD HOMES LTD. AND POLYGON TIMBER COURT LTD. THIS IS CURRENTLY NOT AN OFFERING FOR SALE. ANY SUCH OFFERING CAN ONLY BE MADE BY WAY OF A DISCLOSURE STATEMENT, E. & O.E. 09/01/17

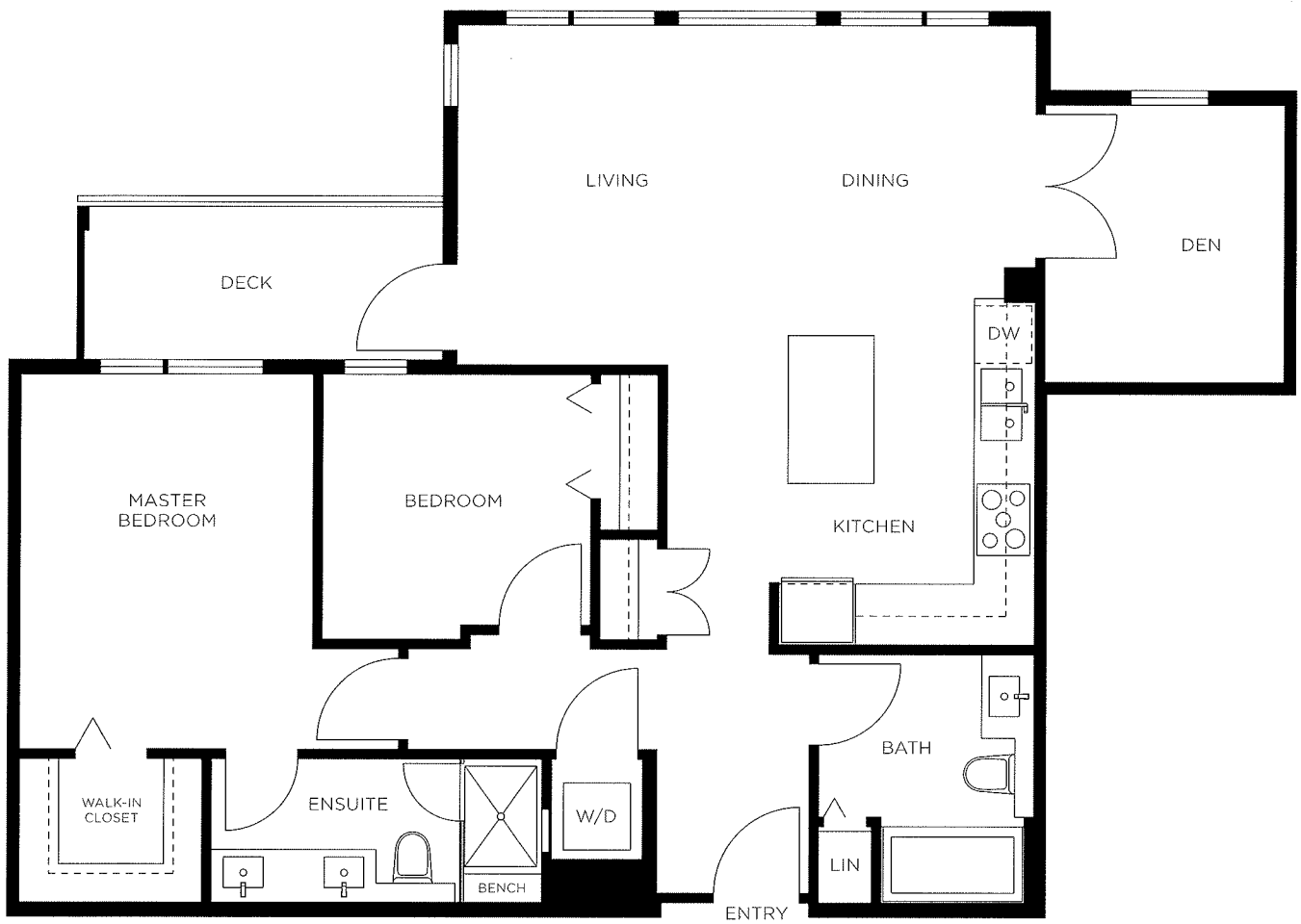


TALUSWOOD

AT TIMBER COURT

B4

2 Bedroom + Den, 2 Bathroom
Approx. 1,039 Sq.Ft.



THE DEVELOPER RESERVES THE RIGHT TO MAKE MODIFICATIONS OR SUBSTITUTIONS SHOULD THEY BE NECESSARY. ANY MEASUREMENTS PROVIDED ARE APPROXIMATE ONLY. THE QUALITY RESIDENCES AT TALUSWOOD ARE BUILT BY POLYGON TALUSWOOD HOMES LTD. AND POLYGON TIMBER COURT LTD. THIS IS CURRENTLY NOT AN OFFERING FOR SALE. ANY SUCH OFFERING CAN ONLY BE MADE BY WAY OF A DISCLOSURE STATEMENT. E. & O.E. 09/01/17

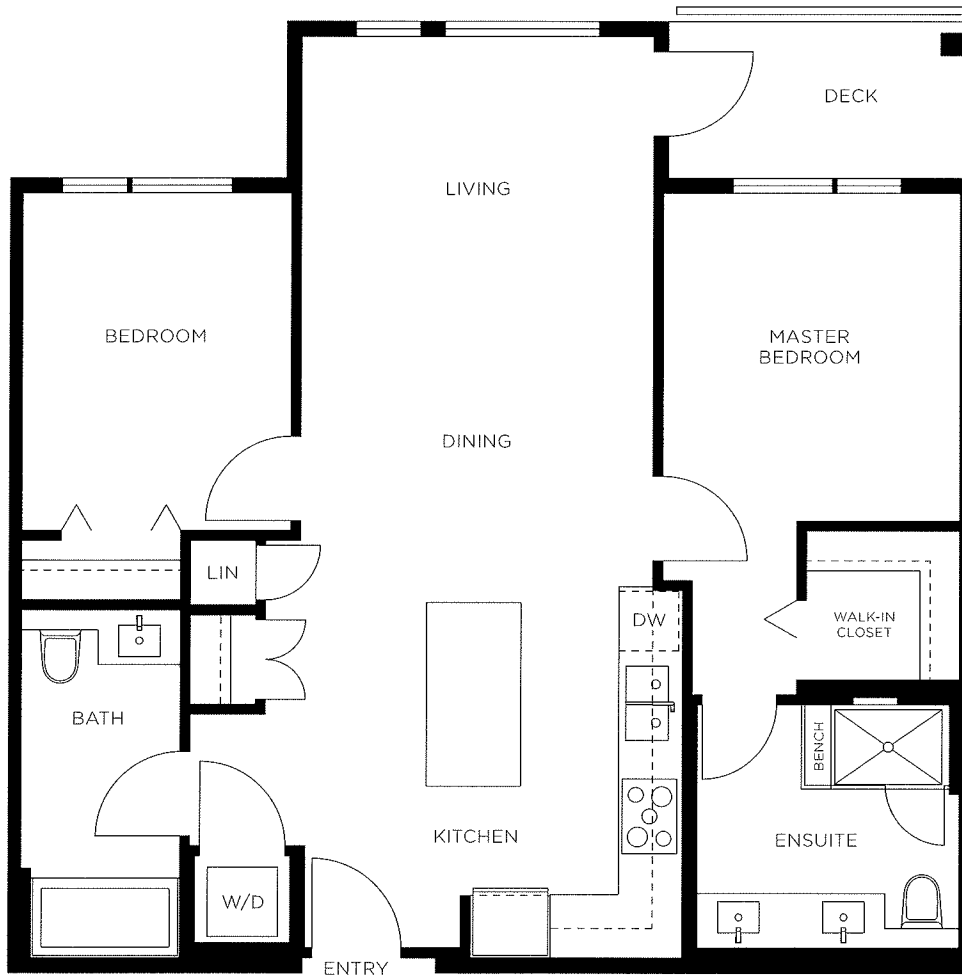


TALUSWOOD

AT TIMBER COURT

C

2 Bedroom , 2 Bathroom
Approx. 912 - 914 Sq.Ft.



THE DEVELOPER RESERVES THE RIGHT TO MAKE MODIFICATIONS OR SUBSTITUTIONS SHOULD THEY BE NECESSARY. ANY MEASUREMENTS PROVIDED ARE APPROXIMATE ONLY. THE QUALITY RESIDENCES AT TALUSWOOD ARE BUILT BY POLYGON TALUSWOOD HOMES LTD. AND POLYGON TIMBER COURT LTD. THIS IS CURRENTLY NOT AN OFFERING FOR SALE. ANY SUCH OFFERING CAN ONLY BE MADE BY WAY OF A DISCLOSURE STATEMENT. E. & O. E. 09/01/17

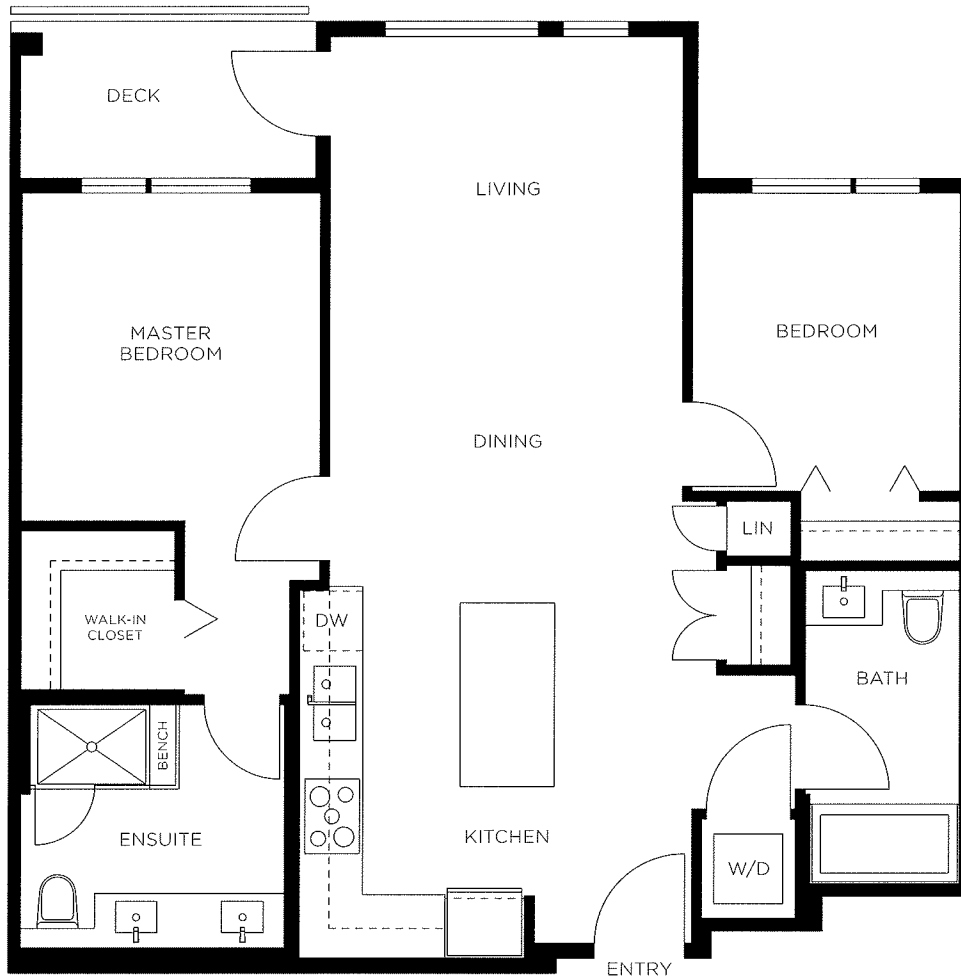


TALUSWOOD

AT TIMBER COURT

C1

2 Bedroom, 2 Bathroom
Approx. 908 Sq.Ft.



THE DEVELOPER RESERVES THE RIGHT TO MAKE MODIFICATIONS OR SUBSTITUTIONS SHOULD THEY BE NECESSARY. ANY MEASUREMENTS PROVIDED ARE APPROXIMATE ONLY. THE QUALITY RESIDENCES AT TALUSWOOD ARE BUILT BY POLYGON TALUSWOOD HOMES LTD. AND POLYGON TIMBER COURT LTD. THIS IS CURRENTLY NOT AN OFFERING FOR SALE. ANY SUCH OFFERING CAN ONLY BE MADE BY WAY OF A DISCLOSURE STATEMENT. E. & O.E. 09/01/17

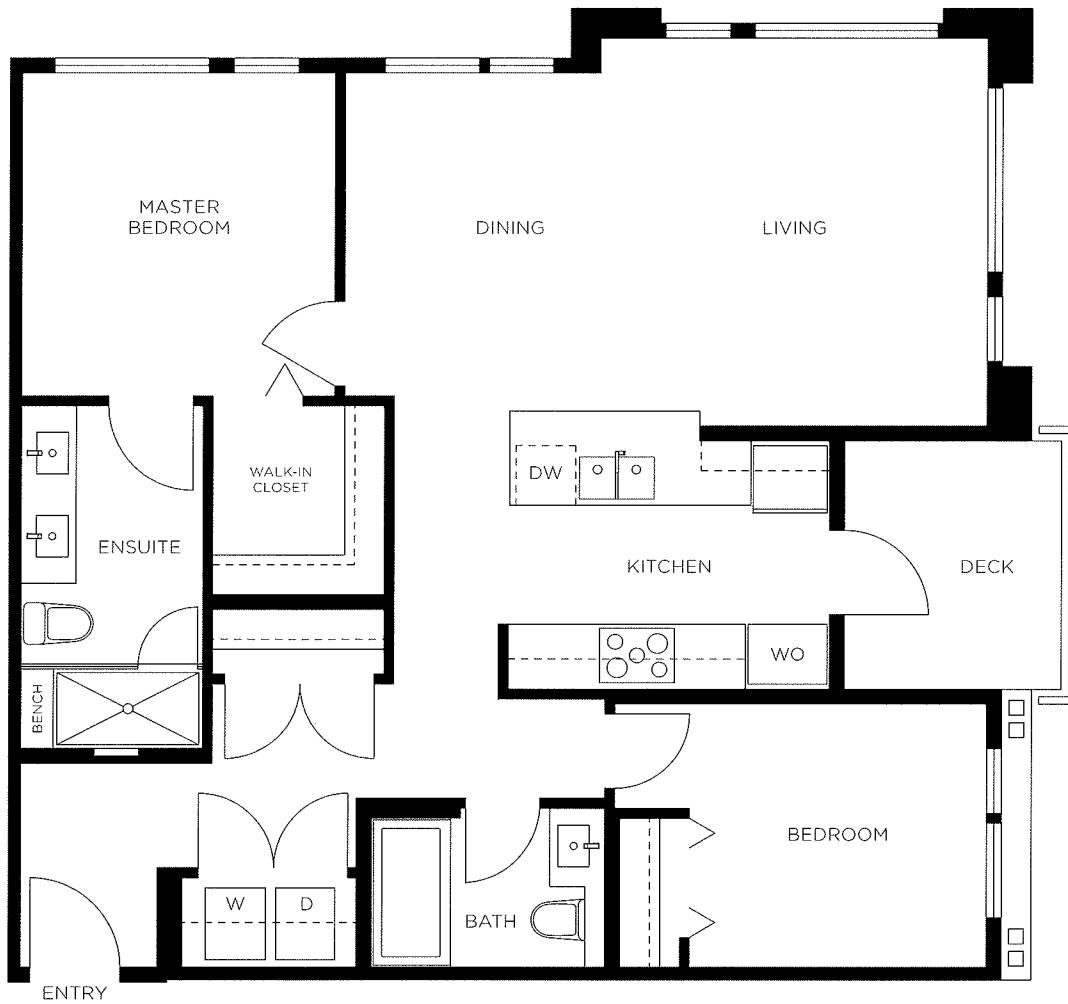


TALUSWOOD

AT TIMBER COURT

D2

2 Bedroom, 2 Bathroom
Approx. 982 - 996 Sq.Ft.



THE DEVELOPER RESERVES THE RIGHT TO MAKE MODIFICATIONS OR SUBSTITUTIONS SHOULD THEY BE NECESSARY. ANY MEASUREMENTS PROVIDED ARE APPROXIMATE ONLY. THE QUALITY RESIDENCES AT TALUSWOOD ARE BUILT BY POLYGON TALUSWOOD HOMES LTD. AND POLYGON TIMBER COURT LTD. THIS IS CURRENTLY NOT AN OFFERING FOR SALE. ANY SUCH OFFERING CAN ONLY BE MADE BY WAY OF A DISCLOSURE STATEMENT. E. & O.E. 09/01/17



TALUSWOOD

AT TIMBER COURT

D3

2 Bedroom, 2 Bathroom
Approx. 992 - 999 Sq.Ft.



THE DEVELOPER RESERVES THE RIGHT TO MAKE MODIFICATIONS OR SUBSTITUTIONS SHOULD THEY BE NECESSARY. ANY MEASUREMENTS PROVIDED ARE APPROXIMATE ONLY. THE QUALITY RESIDENCES AT TALUSWOOD ARE BUILT BY POLYGON TALUSWOOD HOMES LTD. AND POLYGON TIMBER COURT LTD. THIS IS CURRENTLY NOT AN OFFERING FOR SALE. ANY SUCH OFFERING CAN ONLY BE MADE BY WAY OF A DISCLOSURE STATEMENT. E. & O.E. 09/01/17



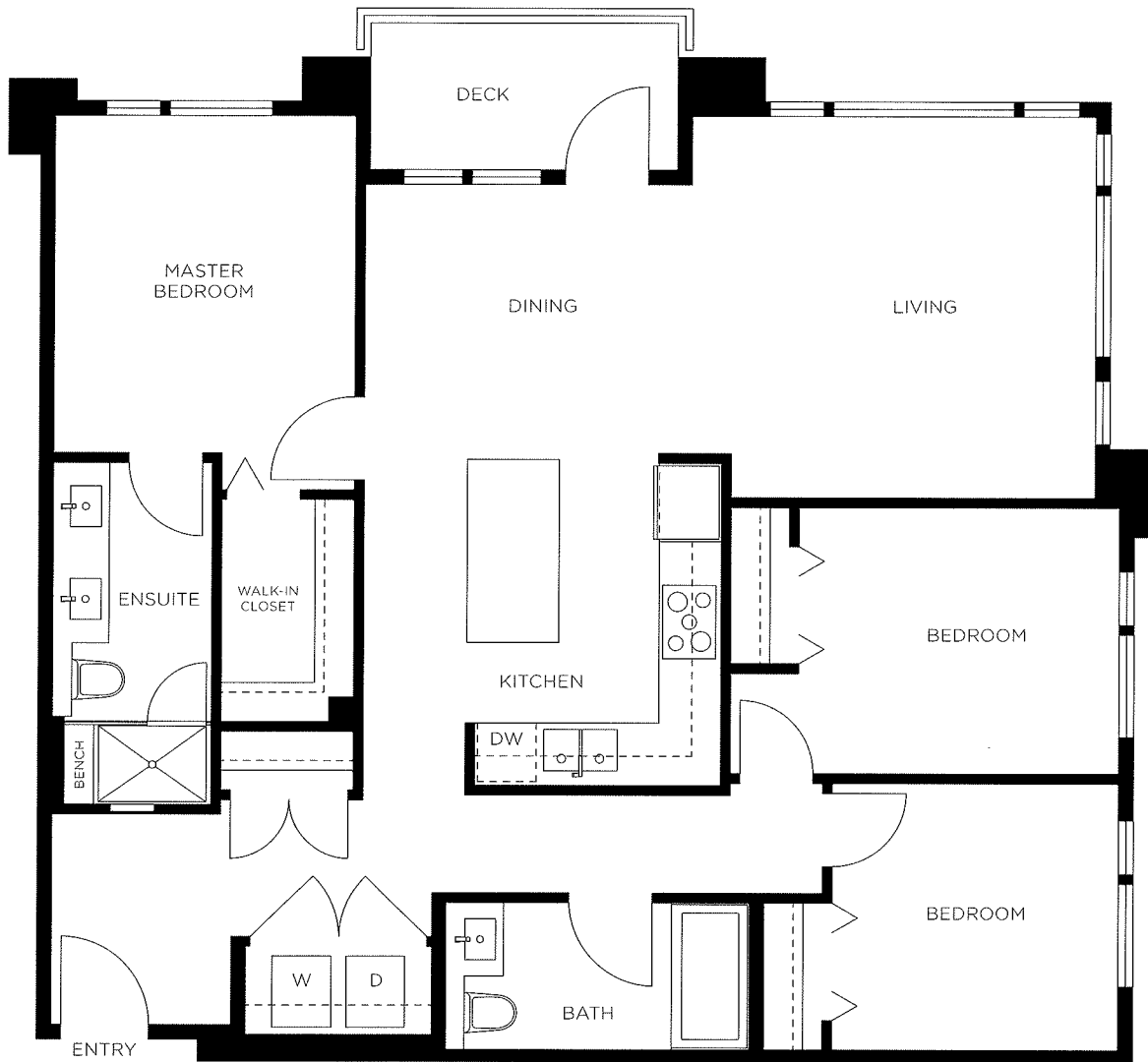
TALUSWOOD

AT TIMBER COURT

E

3 Bedroom, 2 Bathroom
Approx. 1,157 - 1,165 Sq.Ft.

DRAFT



THE DEVELOPER RESERVES THE RIGHT TO MAKE MODIFICATIONS OR SUBSTITUTIONS SHOULD THEY BE NECESSARY. ANY MEASUREMENTS PROVIDED ARE APPROXIMATE ONLY. THE QUALITY RESIDENCES AT TALUSWOOD ARE BUILT BY POLYGON TALUSWOOD HOMES LTD. AND POLYGON TIMBER COURT LTD. THIS IS CURRENTLY NOT AN OFFERING FOR SALE. ANY SUCH OFFERING CAN ONLY BE MADE BY WAY OF A DISCLOSURE STATEMENT. E. & O.E. 09/01/17



TALUSWOOD

AT TIMBER COURT

FEATURES



YOUR LYNN VALLEY HOME

- Designed by award-winning Raymond Letkeman Architects Inc., Taluswood at Timber Court features modern West Coast architecture distinguished by pitched roofs and prominent wood beams
- Find thoughtful pedestrian pathways throughout the community and a focal public art installation on 27th Street
- The lobby is filled with natural sunlight and features timber-supported canopies, a welcoming lounge with a fireplace and imported stone flooring
- Most ground-level homes offer direct entry from the street through a private yard
- Enjoy the convenience of a fully-equipped fitness studio and a social lounge, exclusive to Timber Court residents

DISTINGUISHED INTERIORS

- Welcoming you home is a contemporary, flat-panel, stained wood entry door with polished chrome hardware
- Hydronic (water-based) in-floor radiant heating system keeps you comfortable
- Rich laminate flooring sets the tone for tasteful design throughout
- Airy nine-foot ceilings in living areas create a spacious, open interior
- Premium flat-panel cabinetry in stained wood veneer or glossy white is accented with polished chrome pulls and soft-closing hardware
- Choose from two designer-selected colour schemes: Dark or Light
- Plush nylon carpeting in bedrooms puts durable style at your feet
- Horizontal blinds on windows provide additional privacy
- Low E, double glazed, thermally broken, vinyl windows improve energy efficiency and ensure ideal indoor temperatures year round

SPA-INSPIRED BATHROOMS

- Imported, designer-selected porcelain tile flooring creates a sophisticated look
- Ensuites offer a luxurious oversized shower with frameless shower doors and rainshower head with wand, built-in toiletries niche (some homes) and integrated bench seating (most homes)
- Attractive and durable quartz countertops accented by Grohe faucets
- Prepare for your day in style with a contemporary vanity mirror and lighting
- Water-conserving, dual-flush water closets feature soft-closing lids

GOURMET KITCHENS

- Elegant, polished quartz countertops with a handset marble backsplash
- A kitchen island expands your work space and becomes a family gathering place (some homes)
- Sleek, stainless steel appliances by KitchenAid and Fisher & Paykel coordinate beautifully:
 - Energy Star qualified dishwasher fully integrated with custom cabinetry
 - 17 cu.ft. counter-depth french door refrigerator
 - Wall oven with even-heat technology
 - 5-Burner gas cooktop with full-width cast iron grates
 - Convenient microwave and hoodfan combination unit
- Contemporary recessed pot lights and under-cabinet lighting beautifully illuminate your work area
- Special cabinet features include a Lazy Susan (some homes)
- Durable laminate flooring ensures an effortless clean up
- A dual roll-out recycling bin station makes it easy to care for the environment
- Stylish, undermount stainless steel sink makes food preparation and clean up simple
- Polished chrome faucet by Grohe with retractable pull-out vegetable spray offers style and convenience

PEACE OF MIND

- Gated underground parkade with security cameras and emergency buttons gives you added safety and security
- Each suite entry comes with a heavy deadbolt lock and door viewer
- Ground floor homes feature wired-in alarm systems
- Smoke detectors and fire sprinklers are installed in all homes and common areas
- Comprehensive warranty protection by Travelers Insurance Company of Canada, including coverage for:
 - Materials and labour (2 years)
 - Building envelope (5 years)
 - Structural components (10 years)
- Polygon "New Generation" design and construction provides outstanding durability in the West Coast climate

THOUGHTFUL TOUCHES

- Conveniently located TV outlets and telephone jacks mean your electronics are placed exactly where you want them
- Wired for high-speed Internet access
- Washer/dryer is included in every home
- Enter the building, parkade and common areas with key fob access
- Gated underground visitor parking for friends and family
- A dog wash station in the parkade creates the perfect rinsing area after a day in the neighbourhood trails

OPTIONS TO SUIT YOUR NEEDS

- A storage/bicycle locker to keep your gear
- Additional parking stall