

A two-story house with a prominent gabled roof. The upper level is finished with grey cedar shingles, while the lower level features a mix of stone and wood siding. The house has several large, multi-paned windows with white frames. A central entrance door is visible on the ground floor. The property is surrounded by landscaping, including bushes and trees, under a clear blue sky.

**ROSSETTI**

**3360 MT SEYMOUR PARKWAY**

**NORTLANDS, NORTH VANCOUVER**



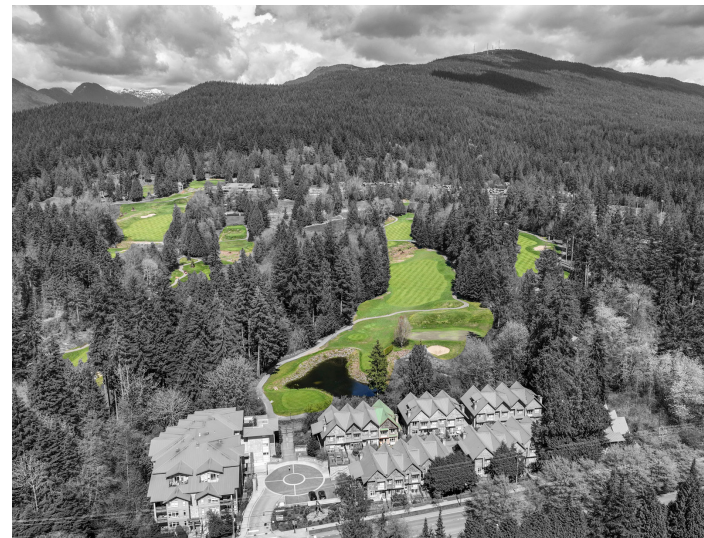
# SPACIOUS END-UNIT AT 'NORTHLANDS TERRACE'

3 Beds + Den | 2.5 Baths | 2,524 Sq/Ft

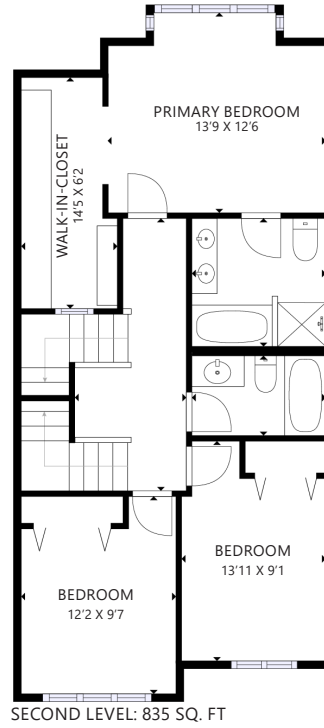
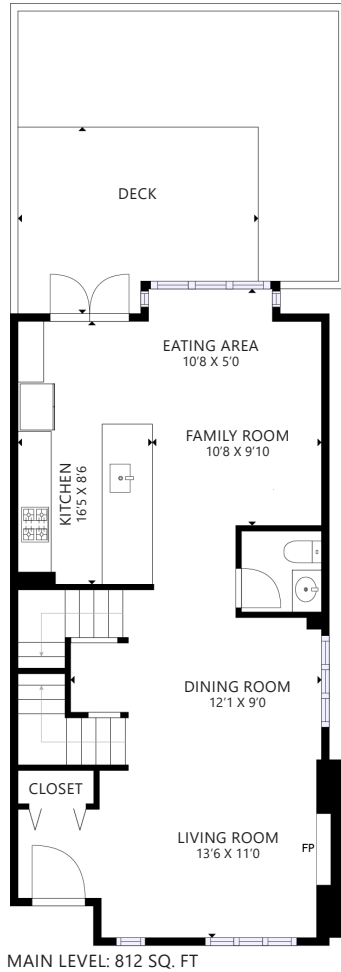
■ Modern touches and tons of room to grow in this end-unit townhome at 'Northlands Terrace', located on the quiet side of the development and backing onto beautiful Northlands golf course. Offering 3 bedrooms, 2.5 bathrooms, and over 2,500 sq/ft of well laid-out living space, plus a large, peaceful, low-maintenance fenced yard that can be used year round. A sun-drenched south facing patio welcomes you into an open-plan main level with 9' ceilings, hardwood floors, and tons of windows that flood the home with natural light. Formal living and dining rooms feature a natural gas fireplace and built-in bar cabinet, and lead seamlessly into the heart of the home - a family room and eating area anchored by an elegant kitchen with stainless steel appliances, quartz countertops, tons of cabinet space, coffee bar nook, and barstool seating for the whole family. Swing open the French-doors and step out onto your private deck and into your peaceful backyard; fully fenced and artificially turf, a safe place for young ones and a fantastic space to entertain. The second level features three generously sized bedrooms and two bathrooms, including a primary suite with lie-in-bed views of the golf course, an extended grand walk-in-closet with built-ins, and 5-piece ensuite with his-and-her sinks, soaker tub, and stand-up shower. The upper loft level features vaulted ceilings and provides great flexibility as a quiet home office, guest room, or games room. Completing the home is a functional lower level providing direct access to 2 side-by-side parking stalls, plus a spacious recreation room, laundry closet, and under-stair storage.



A wonderful family-oriented community suiting all lifestyles, with walking trails that lead to Parkgate Shopping Centre or the mountains, and a short drive to Deep Cove, Mount Seymour, and Ron Andrews Rec Centre - adventure is at your front door!

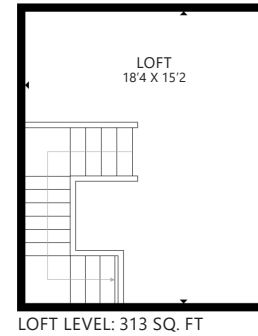
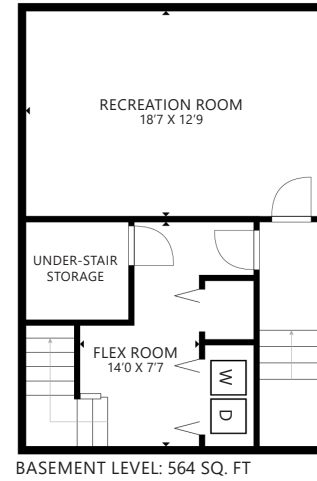


# ROSSETTI



## SQ/FT TOTALS

Main Level: 812 sq/ft  
 Upper Level: 835 sq/ft  
 Loft Level: 313 sq/ft  
 Basement: 564 sq/ft  
**TOTAL: 2,524 sq/ft**



Layout by Matterport. While all reasonable attempts have been made to ensure accuracy and the square footage and room dimensions are believed to be correct to ANSI Standards, due to the possibility of human error the information cannot be guaranteed.